

SITE

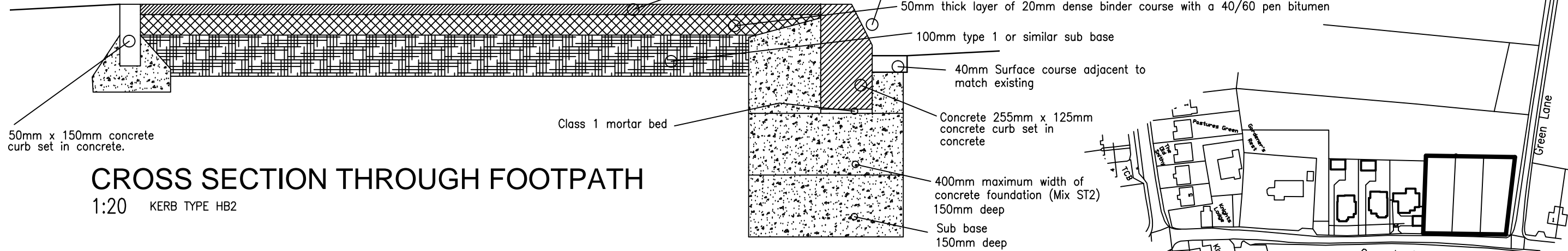
# FOOTPATH

(Approximately 1.8m)

# ROAD

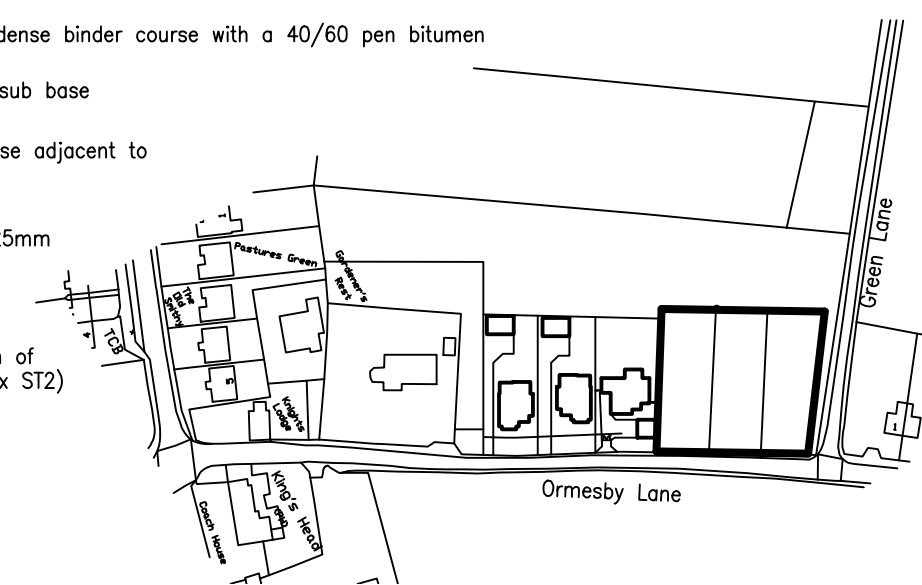
NOTE: Alternative top finish 2 x 25mm layers of 15/10 HRA surface course with a 40/60 pen bitumen.

Fall into site to be 1:20 for 1m.



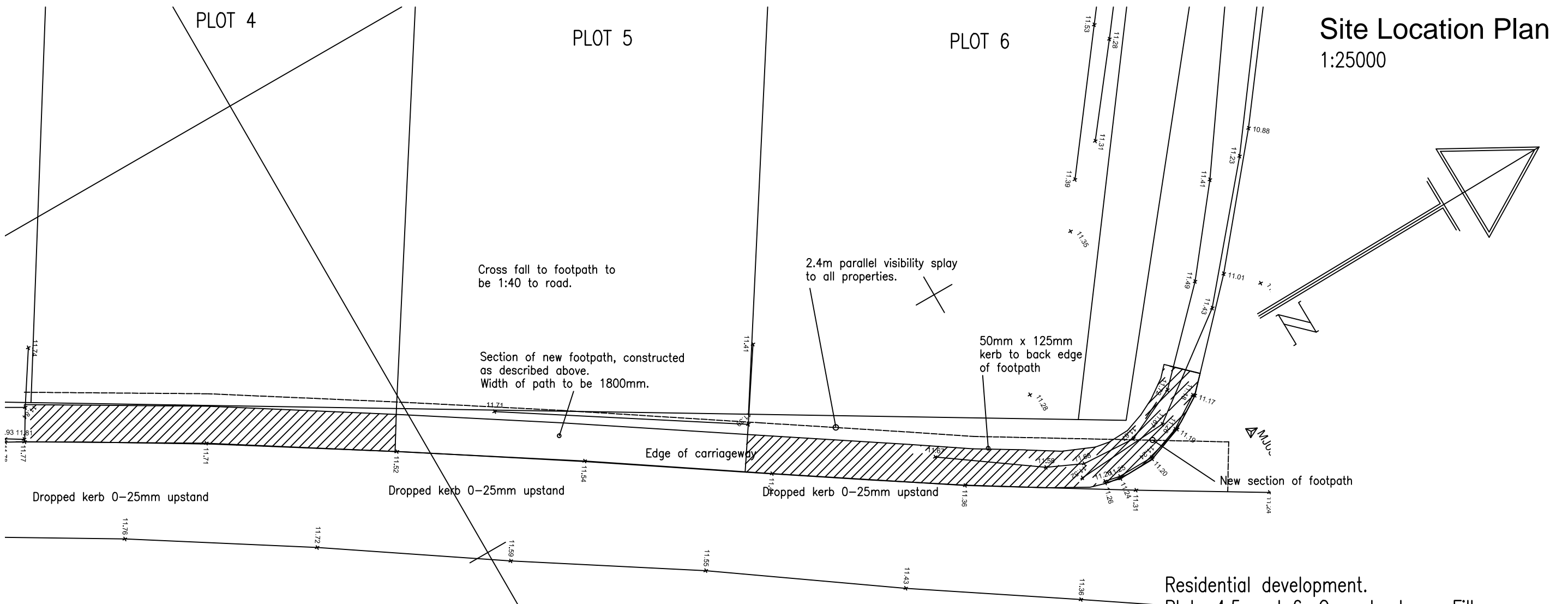
## CROSS SECTION THROUGH FOOTPATH

1:20 KERB TYPE HB2



## Site Location Plan

1:25000



## BLOCK PLAN

1:200

Residential development.  
Plots 4,5 and 6, Ormesby Lane, Filby

Scale: As shown  
Paper size A3

June 2020  
Rev.A(Dec.20)1/Topo survey added